

24小时全国服务热线 | 400-659-0900
24-hour National Service Hotline

设计印刷:  400+044+0093

德国
MST
MASTON



曼斯顿电梯（浙江）有限公司
MASTON ELEVATOR (ZHEJIANG) CO., LTD.

制造基地: 中国海宁高新技术产业园区春潮路15号
Manufacturing Base: No. 15, Chunchao Road, Haining Hi-tech
Industrial Park, China
销售热线(Sales hotline): +86-573-87961821转8053
传真(Fax): +86-573-87967022 邮编(Postcode): 314422
Http: www.maston.com.cn E-mail: info@maston.com.cn



扫描二维码
关注曼斯顿微信公众号



扫描二维码
关注曼斯顿电梯门户网站

曼斯顿电梯
MASTON
ELEVATOR

自动扶梯/人行道
ESCALATORS/MOVING WALKS

智能科技·智享生活
INTELLIGENT TECHNOLOGY AND INTELLIGENT LIFE

GREEN ERA INTELLIGENT FIRST

绿色时代 智能先行

健康与艺术的融合，彰显新时代绿色理念
人性化的生活享受，更科技的智能体验
MST电梯
关怀您的出行安全，给予您更多舒适享受

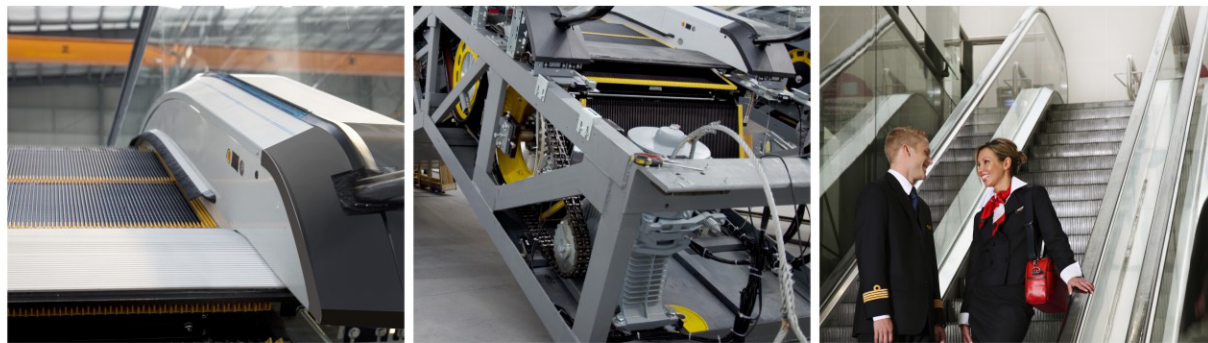
The fusion of health and art demonstrates the green concept of new era
Humanized life enjoyment, more scientific intelligent experience
MST elevator
Care about your travel security and give you more comfortable enjoyment



曼斯顿自动扶梯·成就精彩的每一步

MASTON ESCALATORS

For every wonderful step



人性，畅享安心之道

人、梯和建筑达到完美的协调，既突出您乘坐时的高贵，又突出楼宇的唯美“桥梁”。梯级安全提醒区、安全围裙刷以及可选的围裙扶手照明等功能不仅个性而且自然。

Humanity, enjoy the peace of mind

The perfect coordination of people, ladders and buildings not only highlights the nobleness of your ride, but also highlights the beautiful "bridge" of the building. The function of the step safety reminder area, the safety apron brush and the optional apron armrest lighting are not only individual but also natural.

细节，运载实力杰出

利用先进的设计研发方法，设计出可靠高强度的方管桁架，成为整个产品的有力臂膀。防倒退、防断裂、盘式制动器等多重保护功能，既满足最新国标要求，也为乘客的每一个安全细节做到极致。

Outstanding detail, carrying strength

Using advanced design and development methods, we design a reliable high-strength square tube truss and become a powerful arm of the entire product. Anti-backup, anti-fracture, disc brakes and other multi-protection functions, not only meet the latest national standards, but also for every safety detail of passengers.

安稳，不畏环境挑战

在每一位的乘客脚下，搭载着高精度驱动减速装置、变频控制和吸震滚轮这一系列核心装置，不受外界环境影响，始终以精准高效的运载实力，让您放心搭乘。

Safe, not afraid of environmental challenges

At the foot of every passenger, the core equipment of high-precision drive reduction gear, variable frequency control and shock-absorbing roller is equipped, which is free from the influence of the external environment and always carries the accuracy and efficiency to let you rest assured.



曼斯顿自动扶梯引入航空产品设计模式

优选先进的节能技术和国际高水平的制造工艺，使不同场合不同客户均能享受到稳定、安全、精细和舒适的美妙享受。

Manston escalator introduces aviation product design model

Optimized advanced energy-saving technologies and international high-level manufacturing processes, To make customers in different occasions enjoy the stability, safety, fineness and comfort.



曼斯顿自动人行道·行云流水般的美态

MASTON MOVING WALKS

Smooth beauty

曼斯顿自动人行道严格执行德国MASTON技术管理标准，设计创新，生产严谨，不但可以满足多方面的上下运行，而且可以运送购物手提车或行李等物品，更简单实用，仿佛置身于舒适安逸的时空隧道，是机场、超市、购物中心、展览中心等大型公共场所的靓丽景观。

The Manston moving walks strictly implements the German MASTON technical management standard, design innovation, strict production, not only can meet the various aspects of up and down operation, but also can transport shopping carts or luggage and other items, simpler and more practical, as if in a comfortable and comfortable time and space The tunnel is a beautiful landscape of large public places such as airports, supermarkets, shopping centers and exhibition centers.



安全，乘行稳健可靠

短踏板表面的防滑槽设计，具备良好的防滑性能，使乘行安全舒适。梳齿极小的倾斜角度，可使购物车便捷自如地进出人行道。短踏板与传送链直接相连，自动人行道运行更为宁静平稳，产品维护也更加方便。

Safe, safe and reliable

The anti-slip groove on the surface of the pedal has good anti-slip performance, which makes the ride safe and comfortable. The extremely small angle of the comb allows the shopping cart to easily enter and exit the sidewalk. The short pedal is directly connected to the conveyor chain, and the moving walkway runs quieter and more smoothly, and the product maintenance is more convenient.

缤纷，挑选多重多样

扶手带款式多样，可满足不同环境的个性化需求。冲压花纹式前沿板，美观大方，更具立体感。内外盖板采用高质量不锈钢，大大提高了产品的性能，延长了整机的使用周期，直接的效应就是减少了客户的营运成本。

Colorful, picking multiple

Handrails are available in a variety of styles to meet the individual needs of different environments. The stamped pattern front panel is beautiful and has a three-dimensional effect. The inner and outer cover plates are made of high quality stainless steel, which greatly improves the performance of the product and prolongs the life cycle of the whole machine. The direct effect is to reduce the operating cost of the customer.

精致，节省宝贵空间

鱼腹梁式短踏板大大缩小了空间跨度，使整机结构更为紧凑，可灵活适应建筑格局，为客户节省宝贵的建筑空间。

Exquisite, saving valuable space

The fish-belly-type short pedal greatly reduces the space span, makes the structure of the whole machine more compact, and can flexibly adapt to the building pattern, saving customers valuable building space.

坚定，运行从一而终

选用变频功能将有效省电节能，而室外型自动人行道则能在各种气候环境条件中使用，无论刮风下雨，我们始终在您身边。

Firm, running from start to finish

The use of frequency conversion function will save energy and energy, while the outdoor moving walkway can be used in various climatic conditions. Whether it is windy or rainy, we are always at your side.

自动扶梯/自动人行道·部件配置

ESCALATORS MOVING WALKS

Part Configuration

滚轮内置梯级链

滚轮内置于专门设计的滚轴梯级链，能有效实现降低驱动运行时的噪音，使运行更加平稳和宁静。

Roller built-in step chain

The roller is built into a specially designed roller step chain, which can effectively reduce the noise during driving operation and make the operation more stable and quiet.

自动加油

PLC控制自动加油润滑系统，实现了在扶梯运行过程中给传动链理想的自动润滑，不仅减轻了日常维保工作量，而且可以延长传动机的使用寿命。

Automatic refueling

PLC controls the automatic lubrication system to achieve the ideal automatic lubrication of the transmission chain during the escalator operation, which not only reduces the daily maintenance workload, but also prolongs the service life of the transmission.

扶手入口

新颖别致，富有现代时尚感的流线型扶手带出入口设计，赋予扶梯更多的灵性和亲和力，富含对用户的悉心体察。尽现灵活、圆润、顺畅的美感，又可彰显周围建筑的典雅与尊贵。

Handrail entrance

The novelty, modern and stylish streamlined handrails have an entrance and exit design that gives the escalator more spirituality and affinity, and is enriched with the user's attention. The flexibility, sleekness, and smooth beauty of the building can reflect the elegance and esteem of the surrounding buildings.

故障显示器

当有故障发生时，故障代码就会显示在故障屏障上，确保在最短时间内有效、准确的判断故障部位，大大提高了维修保养的效率。

Fault display

When a fault occurs, the fault code will be displayed on the fault barrier to ensure that the fault location is effectively and accurately determined in the shortest time, which greatly improves the efficiency of maintenance.

自动启动/停止

传感器位于楼层板附近以检测接近的乘客，并且自动开始运行，当所有乘客离开后运行会自动停止。

Automatic start/stop

The sensor is located near the floor panel to detect the approaching passengers and automatically starts running, and the operation automatically stops when all passengers leave.

围裙板刷

安装于围裙板刷两侧，位于梯级上面的围裙板刷，可避免乘客的鞋子碰擦围裙板，能安全有效的防止有异物被带入梯级。

Apron brush

Installed on both sides of the apron plate brush, the apron plate brush on the step can prevent the passenger's shoes from rubbing against the apron plate, which can safely and effectively prevent foreign matter from being brought into the step.

高精度的梯路侧导向导轨系统

导轨系统采用大截面带肩导轨，实现梯级的高精密度横向定位，可以有效的保证梯级与群板间保持最小的间隙，降低了群板与梯级间隙异物夹入的危险。

High-precision ladder side guide rail system

The rail system adopts a large-section shoulder rail to achieve high-precision lateral positioning of the step, which can effectively ensure the minimum gap between the step and the group board, and reduce the risk of foreign matter being caught between the group board and the step gap.

围裙照明（选配）

沿着梯级运行轨迹流线型的围裙板照明光线，在运行时不仅维持了光束的美观大方，同时又强调了扶梯在整幢大楼中的可见度并使乘客的乘坐更加舒心和安全。

Apron lighting (optional)

The streamlined apron illuminating light along the trajectory of the steps not only maintains the aesthetics of the beam during operation, but also emphasizes the visibility of the escalator throughout the building and makes the passenger's ride more comfortable and safe.

梯级警戒灯

绿色荧光灯安装在上部和下部的梯级踏板下，当两连接的梯级运行错开时，绿色荧光便从梯级的齿缝中照出，以帮助乘客识别梯级进出水平段，提高乘梯安全。

Cascade warning light

The green fluorescent lamp is installed under the upper and lower stepped pedals. When the two connected steps are staggered, the green fluorescence is emitted from the tooth gap of the step to help the passenger identify the step in and out of the horizontal section and improve the safety of the boarding.

运行方向指示

运行方向和禁行显示标识置于扶手带出入口处，以显而易见的运行或禁行指示，确保乘客安全自如的乘坐。

Running direction indication

The running direction and the forbidden display mark are placed at the entrance and exit of the handrail belt, with obvious running or forbidden instructions to ensure passengers can ride safely.

扶手照明（选配）

扶手照明安装在扶手支架内，柔和的光线为运行中的自动扶梯增添了几份灵气。

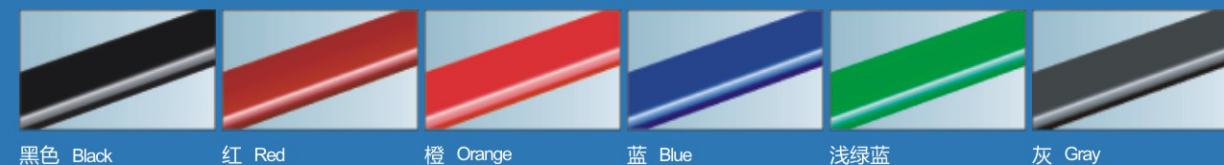
Handrail lighting (optional)

The amrest lighting is mounted in the amrest bracket, and the soft light adds a touch of aura to the running escalator.



扶手带颜色（可供选择的色彩各异的扶手带颜色）

Handrail color (handrail color with different colors to choose from)



黑色 Black

红 Red

橙 Orange

蓝 Blue

浅绿蓝

灰 Gray



护壁板颜色

Wall panel color



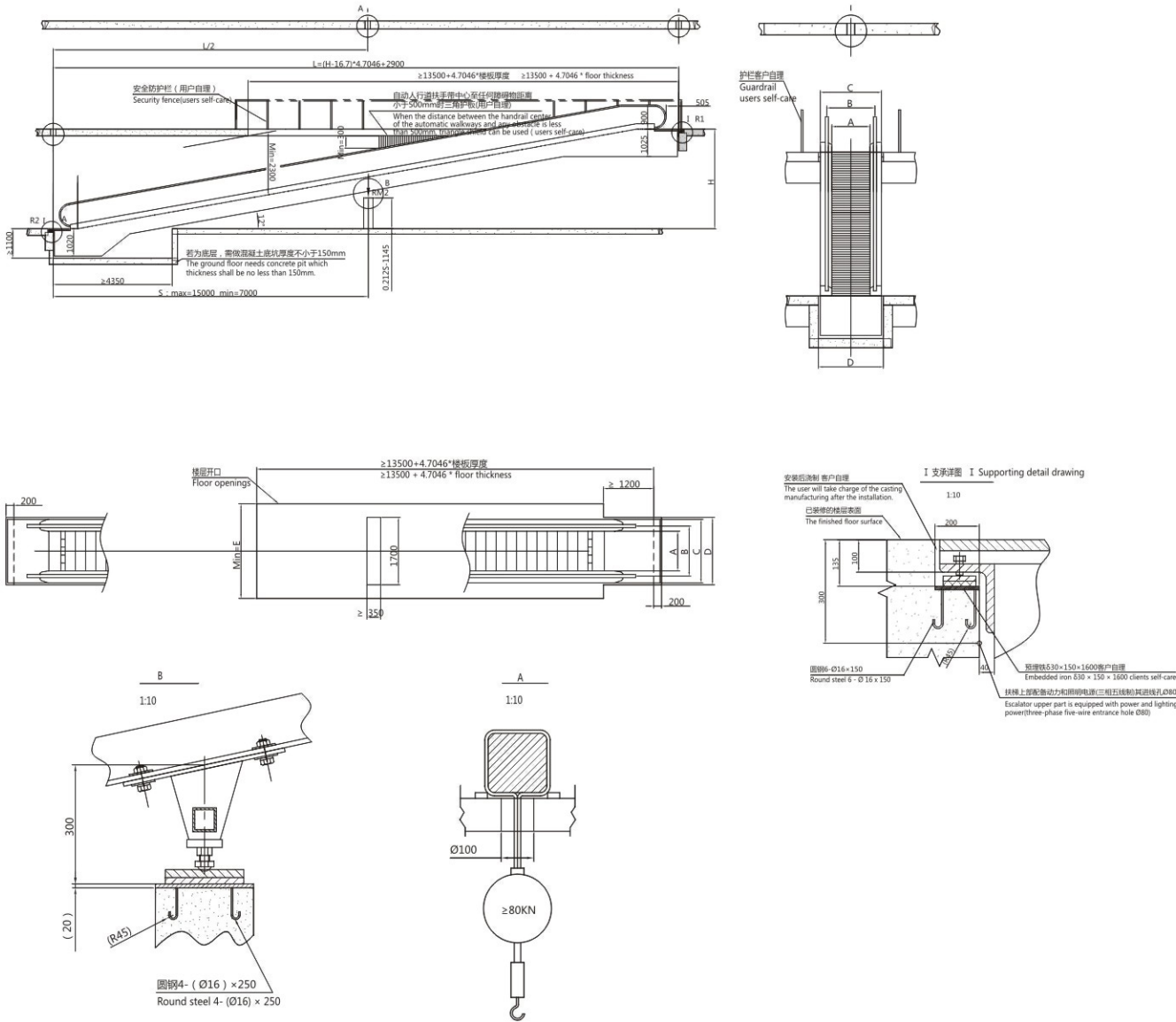
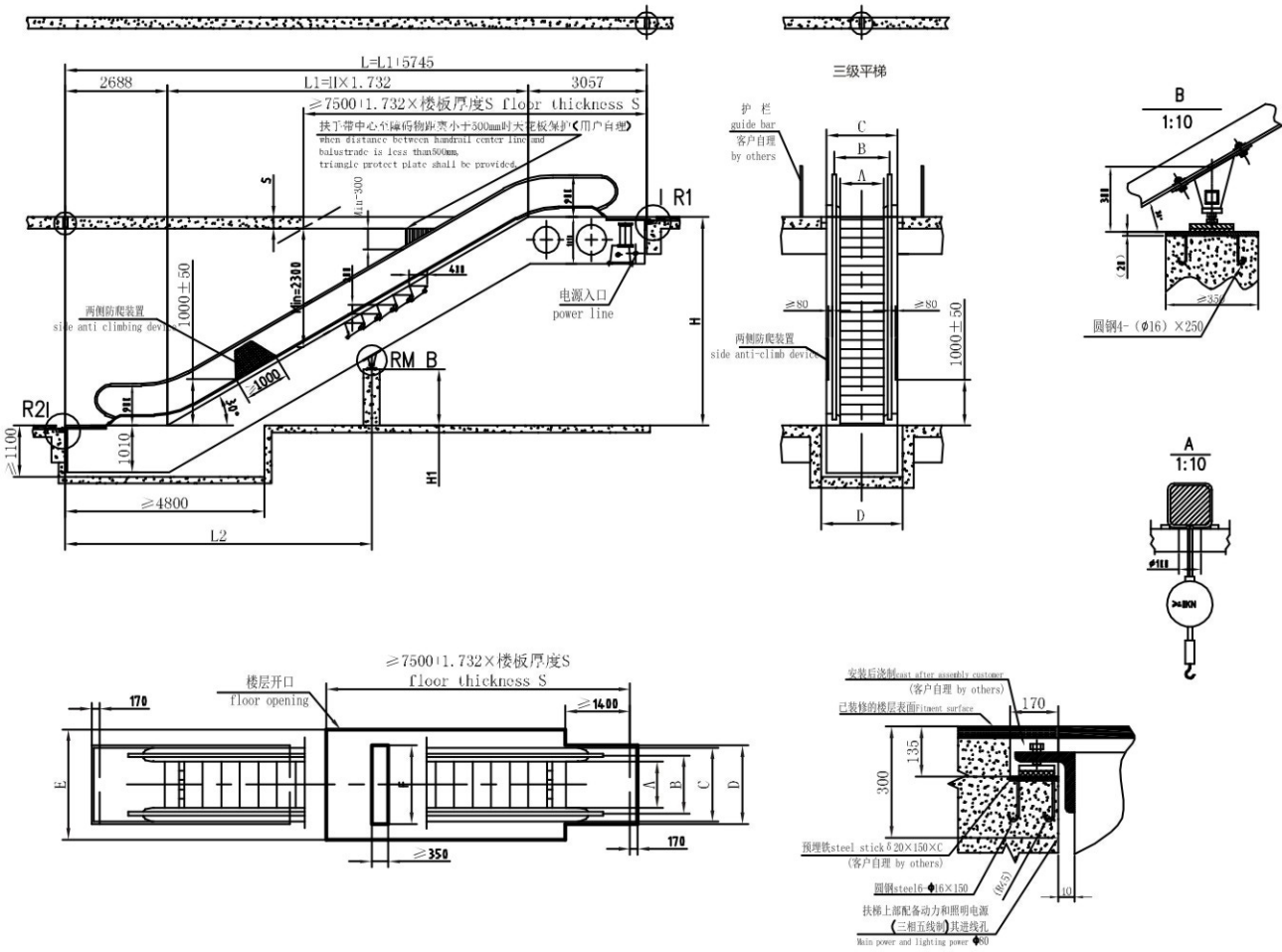
古铜色 Bronze

灰 Gray

透明色
Transparent color

自动扶梯
ESCALATORS

自动人行道12°
MOVING WALKS 12°



土建参数 Civil Engineering Parameters

型号 Model No.	MST30-600(3600phour)					MST30-800(4800phour)					MST30-1000(6000phour)				
Rising height mm	N.W.(kN)	R1(kN)	R2(kN)	RM(kN)	Motor Pauer(kW)	N.W.(kN)	R1(kN)	R2(kN)	RM(kN)	Motor Pauer(kW)	N.W.(kN)	R1(kN)	R2(kN)	RM(kN)	Motor Pauer(kW)
6500	87	51	44	84	8	90	54	46	87	11	94	60	51	100	11
7000	91	53	45	87	8	94	56	48	91	11	98	62	53	104	13
7500	95	55	47	91	11	98	58	50	95	11	102	64	55	109	15
7900	99	57	49	95	11	102	61	53	99	11	106	68	59	113	15

型号 Model No.	A	B	C	D	E	F
MST30-600	600	837	1140	1200	1837	1300
MST30-800	800	1037	1340	1400	2037	1500
MST30-1000	1000	1237	1540	1600	2237	1700

注：土建及参数表仅供参考。Note: the list of civil works and parameters is for reference only.

土建参数 Civil Engineering Parameters

MST-R1000/12												
梯级宽度 Step width (mm)	提升高度H Rising height (mm)	净重 N.W KN	支反力 Static load				电机功率 Motor pauer(KW)	A	B	C	D	E
			R1 KN	R2 KN	RM1 KN	RM2 KN						
1000 (6000phour)	2500	83	37	46	94		7.5	1000	1237	1600	1660	2237
	3000	86	43	52	108		7.5	1000	1237	1600	1660	2237
	3500	95	48	57	123		7.5	1000	1237	1600	1660	2237
	4000	104	53	62	137		9.5	1000	1237	1600	1660	2237
	4500	112	58	67	151		9.5	1000	1237	1600	1660	2237
	5000	121	63	72	166		11	1000	1237	1600	1660	2237
	5500	130	49	58	104	104	11	1000	1237	1600	1660	2237
	6000	139	53	62	113	113	13	1000	1237	1600	1660	2237

注：土建及参数表仅供参考。Note: the list of civil works and parameters is for reference only.

曼斯顿服务·周到·及时·全面

MASTON SERVICE

Is Thoughtful, Timely And Comprehensive

周到 —— 于细节中处处为您着想
Thorough-every Detail Is Designed Especially For You

曼斯顿电梯可根据客户的实际需求，针对客户所采购电梯的使用情况对电梯进行定期检测和维保服务，有效排除电梯安全隐患，确保曼斯顿电梯品质无忧。

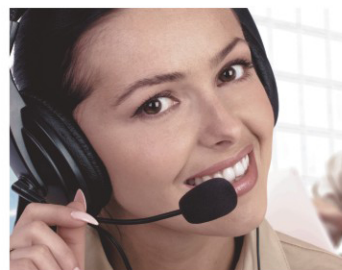
According to the actual needs of customers and the utilization situation of the purchased elevator, MASTON ELEVATOR will offer regular checks and maintenance services, the effective exclusion of elevator safety hazards, to ensure the quality of MASTON ELEVATOR.



及时 —— 于危机关头及时为你服务
Timely-serve You Timely In Every Emergency

曼斯顿电梯开通服务专线，客户可通过拨打400服务热线或登陆网上在线服务平台，及时联系总部或当地驻点维保团队，以24小时的在线服务和30分钟内的到场承诺，为客户提供最及时的服务。

MASTON ELEVATOR opened the service line and customers can call the 400 hotline or visit the on-line service platform, promptly contact headquarters or local maintenance team. With 24 hours of online services and the presence commitment within 30 minutes, MASTON ELEVATOR shall provide customers with the timeliest service.



全面 —— 于服务中争取面面俱到
Total-cover Everything In Service

曼斯顿电梯在“售前、售中、售后”的三阶段服务模式，以完善的服务网络和健全的配件供应渠道，全程为客户提供优质的服务。

MASTON ELEVATOR follows the three stage service model of "pre-sale, sale, and post-sale". Provide quality customer service during the whole process with the sound service network and accessories sets supply channels.



曼斯顿电梯全球首推3T服务计划

MASTON ELEVATOR

Launches Worldwide First 3T Service Plan

曼斯顿电梯全球首推3T服务计划

秉承着“潜心制造，用心服务”的理念，曼斯顿电梯始终将客户的权益放在首位。从事电梯行业几载，曼斯顿电梯深刻认识到完善的售后服务不仅是对客户负责，更是一个企业长远发展的必备条件。结合多年的服务经验，针对现在电梯行业内售后服务的不足之处，曼斯顿电梯首次提出“3T”服务计划，真正将服务落于实处，让每一位乘客都得到曼斯顿的安全守护。

Maston Elevator Launches Worldwide First 3T Service Plan

Uphold the "painstaking manufacturing, dedicated services" concept, MASTON ELEVATOR always gives top priority to the interests of customers. Having engaged in elevator industry for several decades, MASTON ELEVATOR knows it well that a sound post-sale service is not only the liability for the customers but also a necessary condition for the long-term development of the company. Combined with years of experience, MASTON ELEVATOR first proposes "3T" service plan to deal with the current shortcomings in the post-services in the elevator industry, to offer earnest and safe services to each passenger.